



LAKE GEORGE
LAND CONSERVANCY



Beaver Pond - Last Great Shoreline

In 2009 the Lake George Land Conservancy purchased the Last Great Shoreline - 421 acres of land south of Anthony's Nose that includes Jumping Rock - for \$4 million. After four years of fundraising, we are down to the very end of our capital campaign to pay for this property (a list of contributors is posted on lglc.org). **Less than 3% remains** - we're down to \$120,000!!

We're so close - please help us finish by making a donation towards this project. All donations, regardless of size, are important and make a difference!

Once we have paid for this land, the Last Great Shoreline will become part of the first managed wildlife refuge on Lake George. This refuge, including nearly 1,000 acres in total, will protect the habitat of over 100 species of birds and the breeding habitat of large mammals moving between the Adirondacks and the Green Mountains.

And for us humans, we have funded plans to build a dock (next spring) at the Last Great Shoreline so that you, your family and your guests can arrive by boat to explore its miles of trails. We will have a kiosk by the shore to greet you, activity books for the children in your life to follow as they search for clues along the trail, and plenty of signage to point out the cool sights along the trail. We will be improving our parking areas so that school children can be brought by buses for environmental education classes. And, if all goes well, we hope to connect the Gull Bay Preserve and Last Great Shoreline by acquiring a land "bridge." (Please see the back of this sheet for a map of the area.)

By helping us complete this project you will not only be part of one of LGLC's greatest achievements - the refuge will undoubtedly grow in importance over the years - but you will also be guaranteeing that Jumping Rock will remain open for the next generation of jumpers!

With your help, so much can happen. **Thank you!**

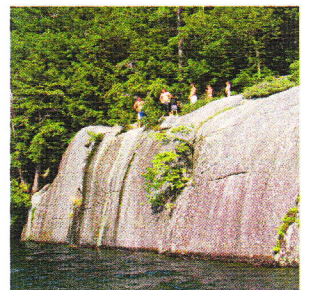
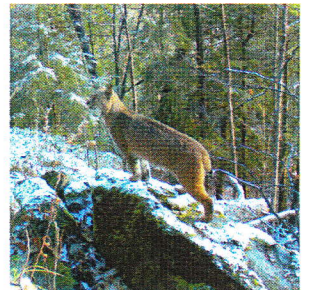
Nancy

Nancy Williams, Executive Director
nwilliams@lglc.org

I hope you will be able to join us in doing on this special project -

Warmest Wishes

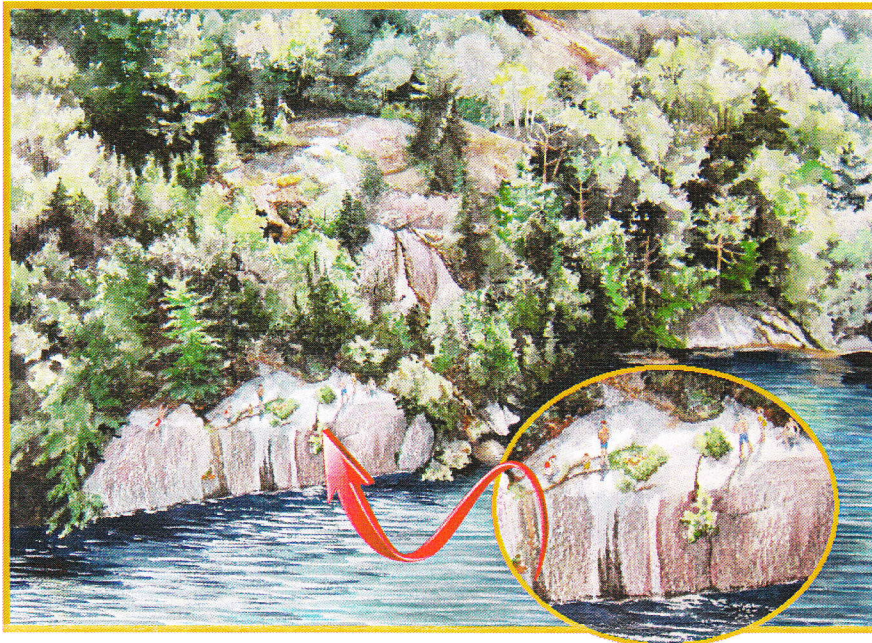
Below: Inhabitants of the Last Great Shoreline and Jumping Rock



Special Opportunity

This beautiful watercolor of Jumping Rock by Marianne Ganter is being offered in a drawing. All who respond to this letter will be entered to the drawing. (No donation is necessary.)

Please see more of Marianne's work at www.marianneganter.com



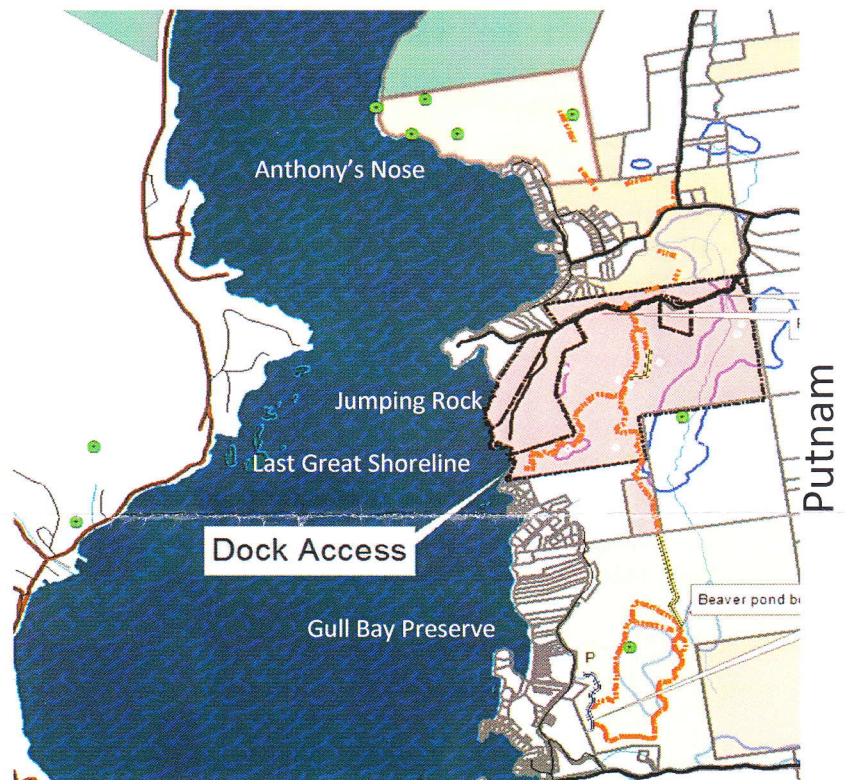
Jumping Rock

by Marianne Ganter October, 2013

The circled area is for illustrative purposes only to provide a detailed view of the people enjoying the rock. Print size is 26 1/2 x 24 inches, matted.

Future Wildlife Refuge

Anthony's Nose to
Gull Bay Preserve
with
Trails, Trail
Connections and
Dock Access



10% of all capital project contributions are allocated to support the administrative functions of the organization.

A copy of LGLC's latest annual report may be obtained, upon request, from Lake George Land Conservancy, PO Box 1250, Bolton Landing, NY 12814 or from the New York State Attorney General's Charities Bureau, 120 Broadway, 3rd Floor, New York, New York